

What's Your Hidden Treasure? Work Like A Captain Play Like A Pirate!

HCBS Conference Session

December 10, 2020

Stacy Roe, Louella Kaufer, Jason Flint, Barb Kleist



+

Welcome!

Barb Kleist





Poll Question #1 - What are some of the roles, current or past, that influence your work?
(Select all that apply)



- Person with lived experience /person with a disability
- Parent
- Sibling/Family member
- Friend
- Guardian

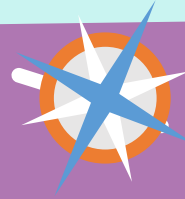
- Ally/Advocate
- Direct Support Professional
- Frontline Supervisor/Manager
- Executive Director/CEO
- Health & Human Services Professional/Polycymaker





Importance of Shared Vision and Honoring Commitments

Jason Flint



Ingredients for a Shared Vision

- A lawsuit, a plan, and some money
- Building blocks of systems change
- A captain, her crew, and other true believers



Culture Change needs Partners!

- Resources to invite other organizations to undergo change
- A direct line to the State – level 3 changes
- Commitment comes from relationships, shared experience
- From commitment comes sustained engagement and support





Discovering a Purpose and Practices to Create Transformation

Louella Kaufer



Important for


- Formal structures
- Shared language
- Level 1, 2, and 3
- Technical Assistance
- Community of practice
- Ad hoc meetings
- Lean in



Important to

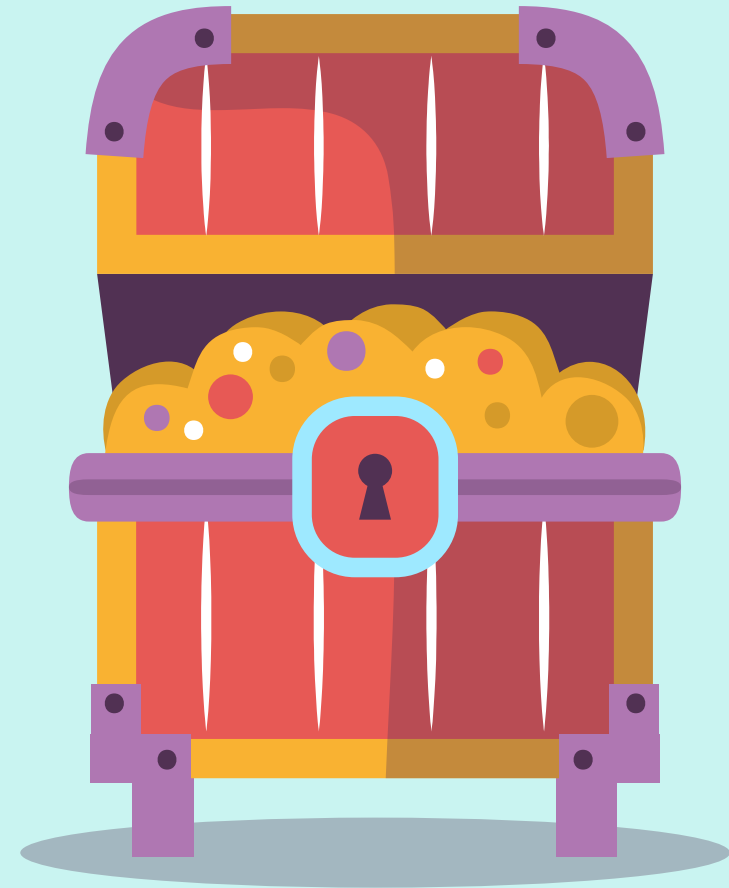


- Have fun
- Relationships
- Use humor
- Food
- Creativity-work along the edges
- Ask questions, learn
- See the opportunities and take them
- Open, honest conversation

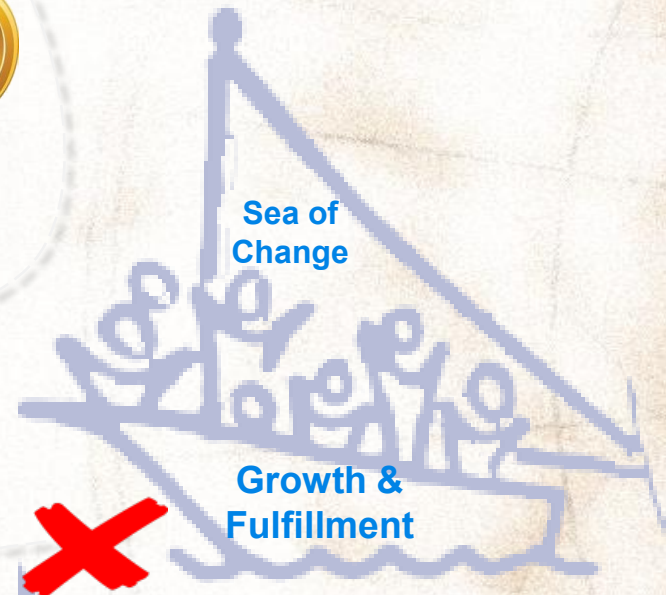


Finding Hidden Treasure

Stacy Roe



FINDING HIDDEN TREASURE





What are you seeing for yourself from this?

Conversation and Questions

Leaving in Action

- Questions for you to consider...
 - What is one thing that caught your attention during our session?
 - What questions did this raise for you?
 - What are you seeing for yourself from this?



Questions?

Our contact information:

Jason Flint

Manager, Disability Services Division, MN Department of Human Services
Jason.A.Flint@state.mn.us 651-431-2386

Louella Kaufer

Senior Dept. Administrator, Hennepin County
Louella.kaufer@hennepin.us 612-348-3471

Stacy Roe

Vice President of Vision Fulfillment, Mains'l Services
sroe@mainsl.com 763-416-9146

Barbara Kleist

Program Director, University of Minnesota
Institute on Community Integration
kleis041@umn.edu 612-624-1297



Thank you!



UNIVERSITY OF MINNESOTA



THE BUSINESS OF
HOPES & DREAMS

