



# Identifying the Bar, Then Working to Raise It: *Assessing Quality of LTSS Delivered Through Managed Care*

Lindsey Roth, NCQA

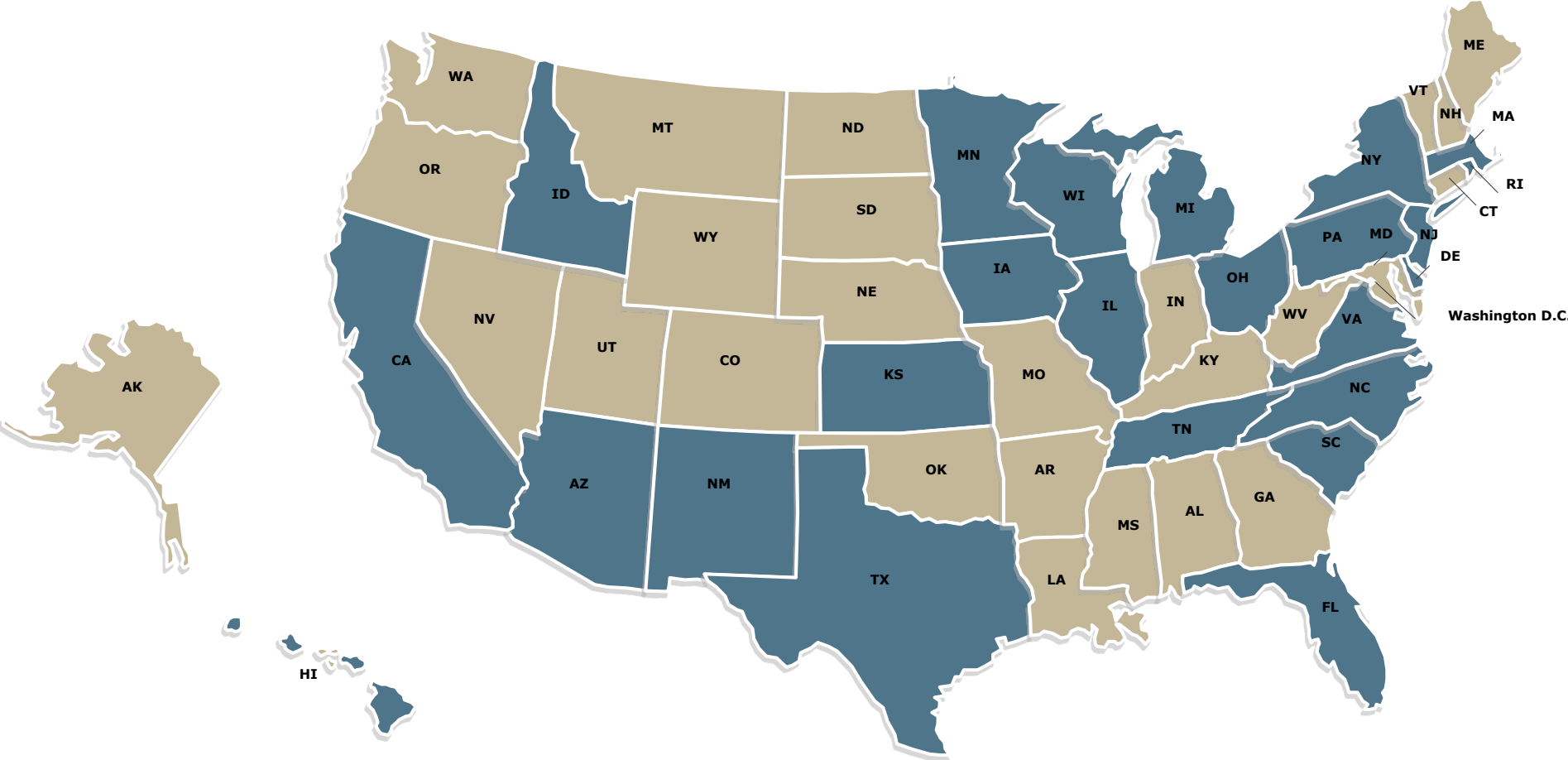
Wilmarie Gonzalez, Pennsylvania Department of Human Services

Abigail Coleman, Pennsylvania Department of Human Services

# Delivery of LTSS is Changing

## *Medicaid Shift to Managed Care*

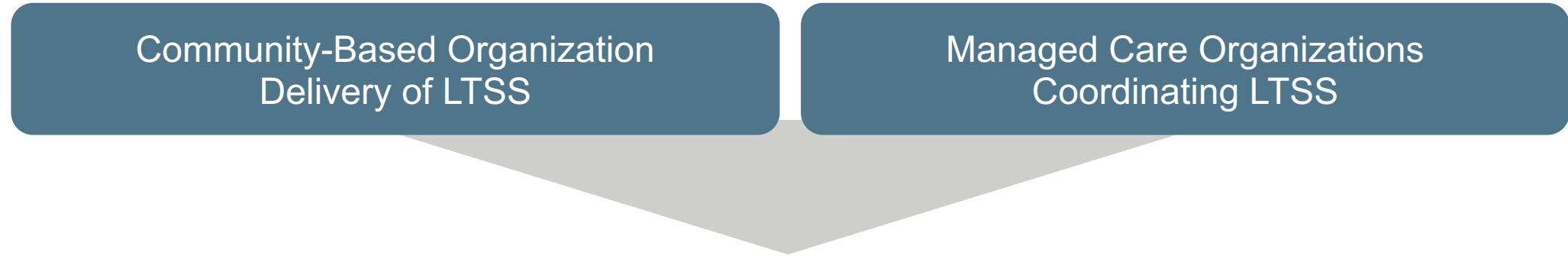
Medicaid-funded LTSS has a long history. However in recent years, states are increasingly moving to delivery of LTSS through managed care (MLTSS).



■ 24 states with MLTSS program

# Creating A Need For Performance Measurement

*Medicaid Shift to Managed Care*



## *National Standardized Quality Measures*

- Ensure oversight
- Identify program priorities
- Empower comparisons

# National LTSS Quality Measurement

## *HEDIS MLTSS*

NCQA & Mathematica developed 8 MLTSS quality measures for CMS. With CMS permission, four of these measures were introduced in HEDIS in 2018:

---

### HEDIS LTSS

---



*LTSS Comprehensive Assessment and Update*



*LTSS Comprehensive Care Plan and Update*



*LTSS Shared Care Plan with Primary Care Practitioner*



*LTSS Reassessment/Care Plan Update after IP Discharge*

# HEDIS MLTSS Overview

*Assessing Critical Processes to Facilitate Oversight and Ensure High-Quality Coordination*



**Comprehensive Assessment**

**Percent of LTSS members with a documented comprehensive assessment, annually or within 90 days of enrollment**

Two rates: core elements; core + supplemental elements



**Comprehensive Care Plan**

**Percent of LTSS members with a documented care plan, annually or within 120 days of enrollment**

Two rates: core elements; core + supplemental elements



**Shared Care Plan**

**Percent of LTSS members with a care plan that was transmitted to their primary care practitioner within 30 days**



**Reassessment Care Plan Update**

**Percent of LTSS member inpatient discharges that resulted in a reassessment and care plan update within 30 days of discharge**

Two rates: reassessment; reassessment + care plan update

# Core and Supplemental Elements

*Demonstrating High Performance*

| <i>LTSS Assessment</i>   | <i>Care Plan</i>   |
|--|---|
| <p data-bbox="529 625 835 664"><b><u>9 Core Elements</u></b></p> <p data-bbox="224 696 1141 873">ADLs, Acute/Chronic Health Conditions, Medications, Cognitive Function, Mental Health, Home Safety, Living Arrangement, Caregivers, Care Providers</p> <p data-bbox="361 1011 1006 1049"><b><u>12 or More Supplemental Elements</u></b></p> <p data-bbox="224 1082 1141 1188">Examples: IADL, Use of Assistive Devices, Falls Risk, Alcohol or Drug Use, Cultural Preferences</p> | <p data-bbox="1635 618 1941 656"><b><u>9 Core Elements</u></b></p> <p data-bbox="1330 689 2247 866">ADLs, Acute/Chronic Health Conditions, Medications, Cognitive Function, Mental Health, Home Safety, Living Arrangement, Caregivers, Care Providers</p> <p data-bbox="1490 1011 2114 1049"><b><u>4 or More Supplemental Elements</u></b></p> <p data-bbox="1381 1082 2229 1188">Examples: Mental Health Plan, Social Need Plan, Plan to Meet Member's Goal</p> |

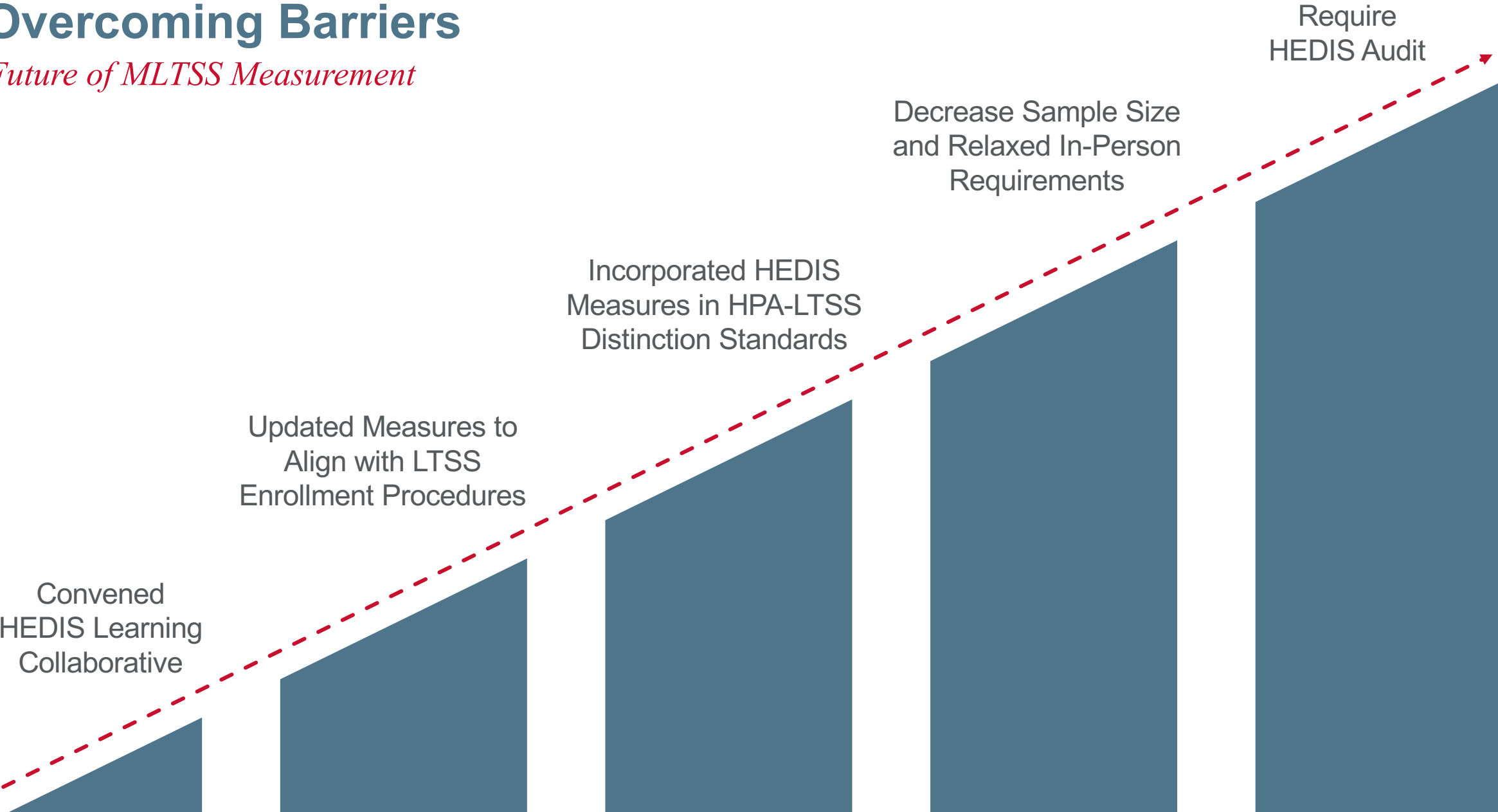
# Early Results

## *HEDIS MLTSS*

| HEDIS LTSS Measure         |                                     | MY2018           |           | MY2019           |           |
|----------------------------|-------------------------------------|------------------|-----------|------------------|-----------|
|                            |                                     | # of Submissions | Avg. Rate | # of Submissions | Avg. Rate |
| Comprehensive Assessment   | <i>Core Elements</i>                | 19               | 50%       | 18               | 77%       |
|                            | <i>Supplemental Elements</i>        |                  | 49%       |                  | 74%       |
| Comprehensive Care Plan    | <i>Core Elements</i>                | 7                | 41%       | 17               | 73%       |
|                            | <i>Supplemental Elements</i>        |                  | 38%       |                  | 73%       |
| Shared Care Plan with PCP  |                                     | 8                | 46%       | 13               | 64%       |
| Updates After IP Discharge | <i>Reassessment</i>                 | 7                | 27%       | 15               | 23%       |
|                            | <i>Reassessment &amp; Care Plan</i> |                  | 27%       |                  | 18%       |

# Overcoming Barriers

*Future of MLTSS Measurement*







*Pennsylvania's Journey*

# Delivering LTSS Through Managed Care

# History of LTSS

## *Community HealthChoices (CHC) MLTSS*

### **WHO IS PART OF CHC?**

Individuals 21 yrs. of age or older and dually eligible for Medicare and Medicaid.

Individuals who are 21 yrs. of age or older and eligible for Medicaid (LTSS) because they need the level of care provided by a NF.

- This care may be provided in the home, community, or nursing facility.
- Individuals currently enrolled in the PACE (LIFE) Program will not be enrolled in CHC unless they expressly select to transition from LIFE to a CHC managed care organization (MCO).

Behavioral Health Services—*carved out*.

# History of LTSS

## *Community HealthChoices (CHC) MLTSS--Goals*

### **GOAL 1**

Enhance opportunities for community-based living.

---

### **GOAL 2**

Strengthen coordination of LTSS and other types of health care, including all Medicare and Medicaid services for dual eligibles.

---

### **GOAL 3**



Enhance quality and accountability.



### **GOAL 4**

Advance program innovation.

---

### **GOAL 5**

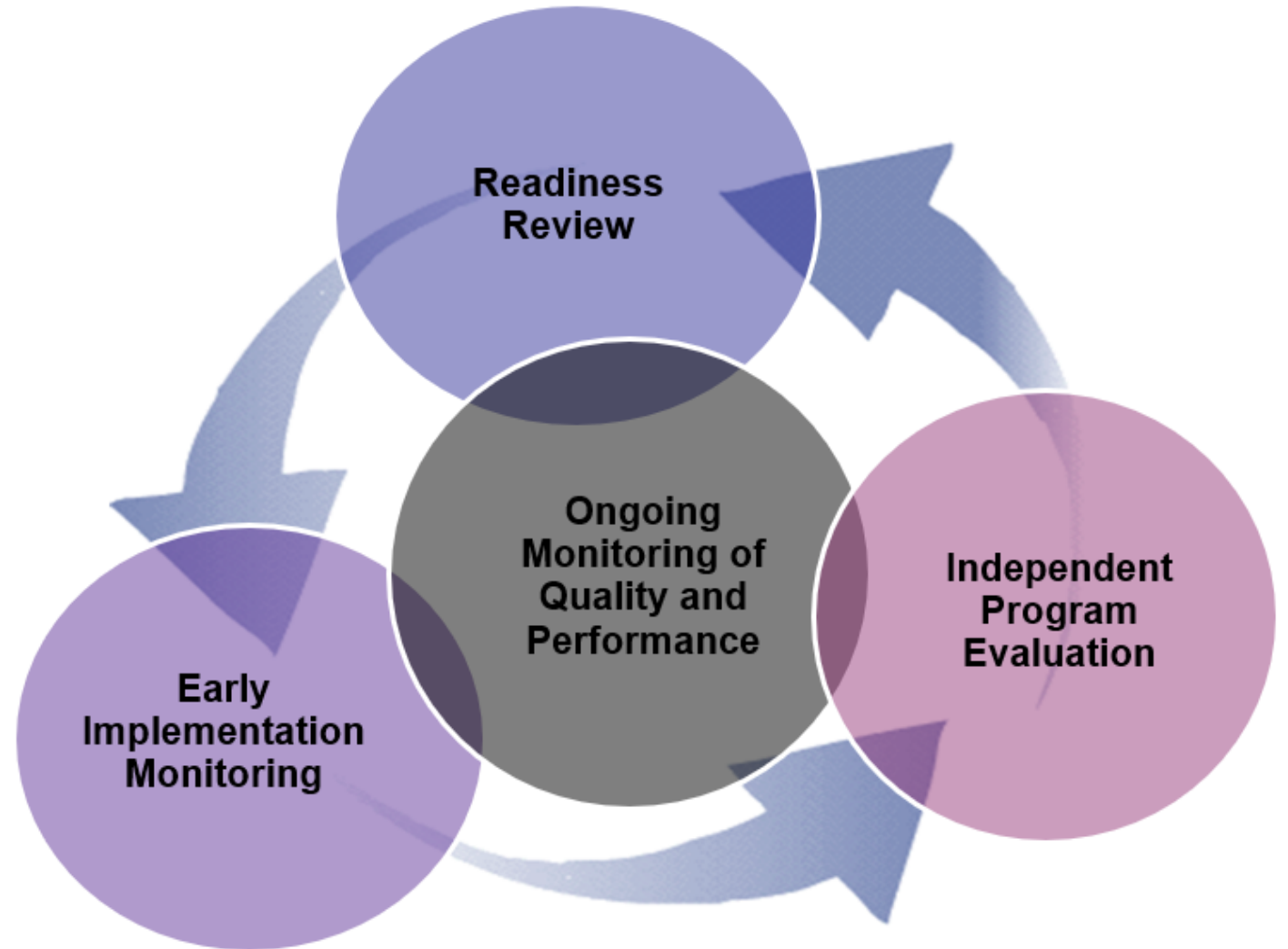
Increase efficiency and effectiveness.

# Early Quality Management

Community HealthChoices (CHC) MLTSS

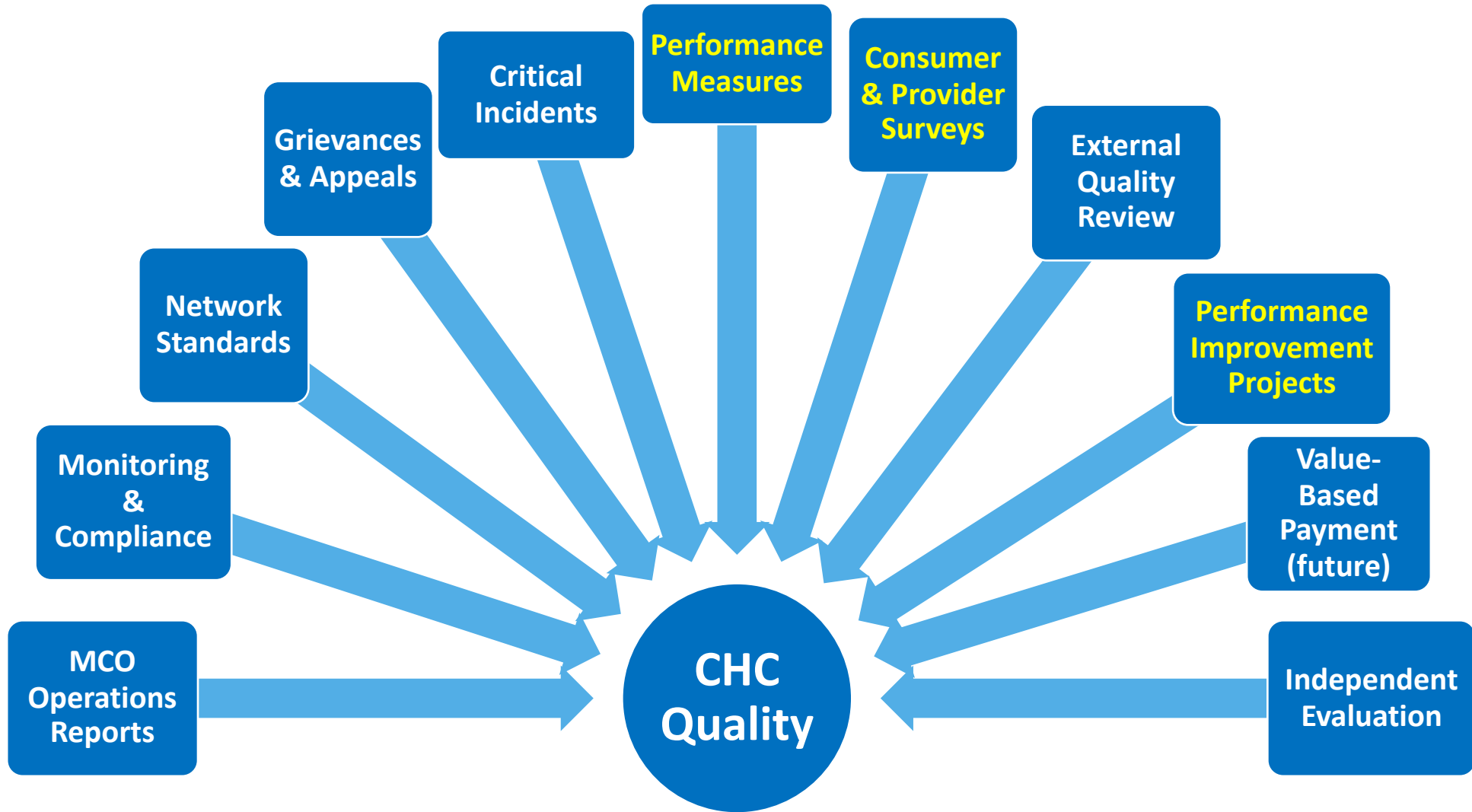
## Development of Quality Metrics

- Medicaid Quality Strategy
- MCO Operation Reports
- Key Performance Measures
- Identifying HEDIS measures
- PA Performance Measures



# Current Quality Measurement

*Community HealthChoices (CHC) MLTSS*

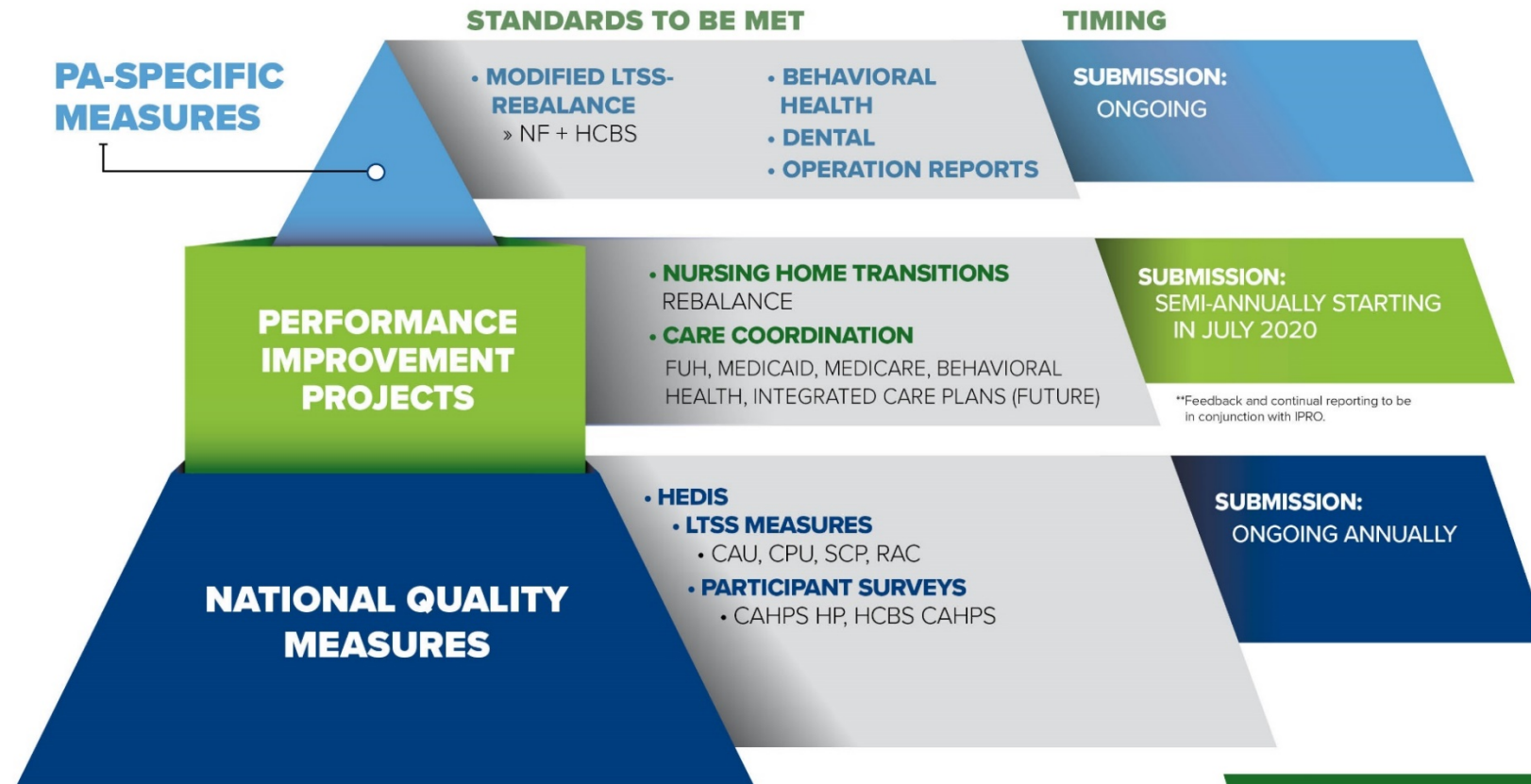


# Current Quality Measurement

*Community HealthChoices (CHC) MLTSS*



## QUALITY MEASURES SUBMITTED BY MCOS



# Future Potential of Quality Measurement

*Community HealthChoices (CHC) MLTSS*

## Overarching Goals:

- Increase access to healthcare services
- Improve quality of healthcare services
- Bend the healthcare cost curve
- Strengthening Care Coordination between Medicaid and Medicare

## Continue Quality Management Initiatives

## Build On and Improve Current Measures

## Focus on Racial Inequities and Reduce Health Disparities



*Questions*