



An **Innovative Program**
Keeping Older Adults
Independent in the Community

What is ElderPlace?

- A **PACE** model of care
Program of **A**ll-inclusive **C**are for the **E**lderly
- An integrated system of care that is:
 - ✓ Community Based
 - ✓ Comprehensive
 - ✓ Capitated
 - ✓ Coordinated

Program of All-Inclusive Care for the Elderly (PACE)

- The Program of All-Inclusive Care for the Elderly (PACE) provides comprehensive long term services and supports to Medicaid and Medicare enrollees.
- An interdisciplinary team of health professionals provides individuals with coordinated care.
- For most participants, the comprehensive service package enables them to receive care at home rather than receive care in a nursing home.
- The PACE program becomes the sole source of services for Medicare and Medicaid eligible enrollees.

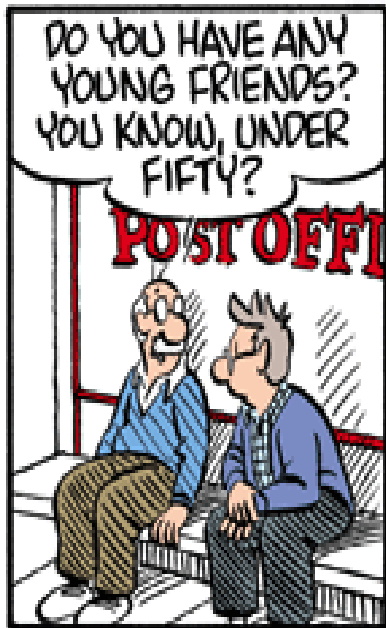
PACE

- Financing for the program is capped, which allows providers to deliver all services participants need rather than limit them to those reimbursable under Medicare and Medicaid fee-for-service plans.
- The PACE model of care is established as a provider in the Medicare program and enables states to provide PACE services to Medicaid beneficiaries as a state option.
- Individuals can leave the program at any time.
- <http://www.medicaid.gov/Medicaid-CHIP-Program-Information/By-Topics/Long-Term-Services-and-Support/Integrating-Care/Program-of-All-Inclusive-Care-for-the-Elderly-PACE/Program-of-All-Inclusive-Care-for-the-Elderly-PACE.html>



Who Does PACE Serve?

- 55 years and older
- Nursing facility eligible
- Able to live safely in the community
- Reside in catchment area



©Brian Crane Dist. by The Washington Post Writers Group

You should know this about PACE

- PACE Provides Comprehensive Care
- The Focus is on You
- PACE Covers Prescription Drugs
- PACE Supports Family Caregivers
- PACE Provides Services in the Community
- PACE is Sponsored by the Health Care Professionals Who Treat You
- Preventive Care is Covered and Encouraged
- PACE Provides Medical Transportation
- What You Pay for PACE Depends on Your Financial Situation

PACE Services provided

- nursing
- physical therapy
- occupational therapy
- recreational therapy
- meals
- nutritional counseling
- social work
- medical care
- home health care
- personal care
- prescription drugs
- social services
- audiology
- dentistry
- optometry
- podiatry
- speech therapy
- respite care

Hospital and nursing home care when necessary

PACE

For more information about PACE do the following:

- Visit [www.npaonline.org on the web](http://www.npaonline.org). This website is sponsored by the National PACE Association.
- Visit www.medicare.gov/Nursing/Alternatives/PACE.asp on the web.
- Call 1-800-MEDICARE (1-800-633-4227). TTY users should call 1-877-486-2048.

PACE History

- The PACE model of care can be traced to the early 1970s, when the Chinatown-North Beach community of San Francisco saw the pressing needs of families whose elders had immigrated from Italy, China and the Philippines for long term care services.
- Dr. William L. Gee, a public health dentist, headed the committee that hired Marie-Louise Ansak in 1971 to investigate solutions.
- They, along with other community leaders, formed a nonprofit corporation, On Lok Senior Health Services, to create a community based system of care.
- On Lok is Cantonese for "peaceful, happy abode."

PACE Philosophy

The PACE model is centered around the belief that it is better for the well-being of seniors with chronic care needs and their families to be served in the community whenever possible.

- PACE assumes full risk for meeting acute and long term care needs until death or discharge
- PACE is fully accountable for cost AND quality

National PACE Association

801 North Fairfax Street • Suite 309 • Alexandria, Virginia 22314

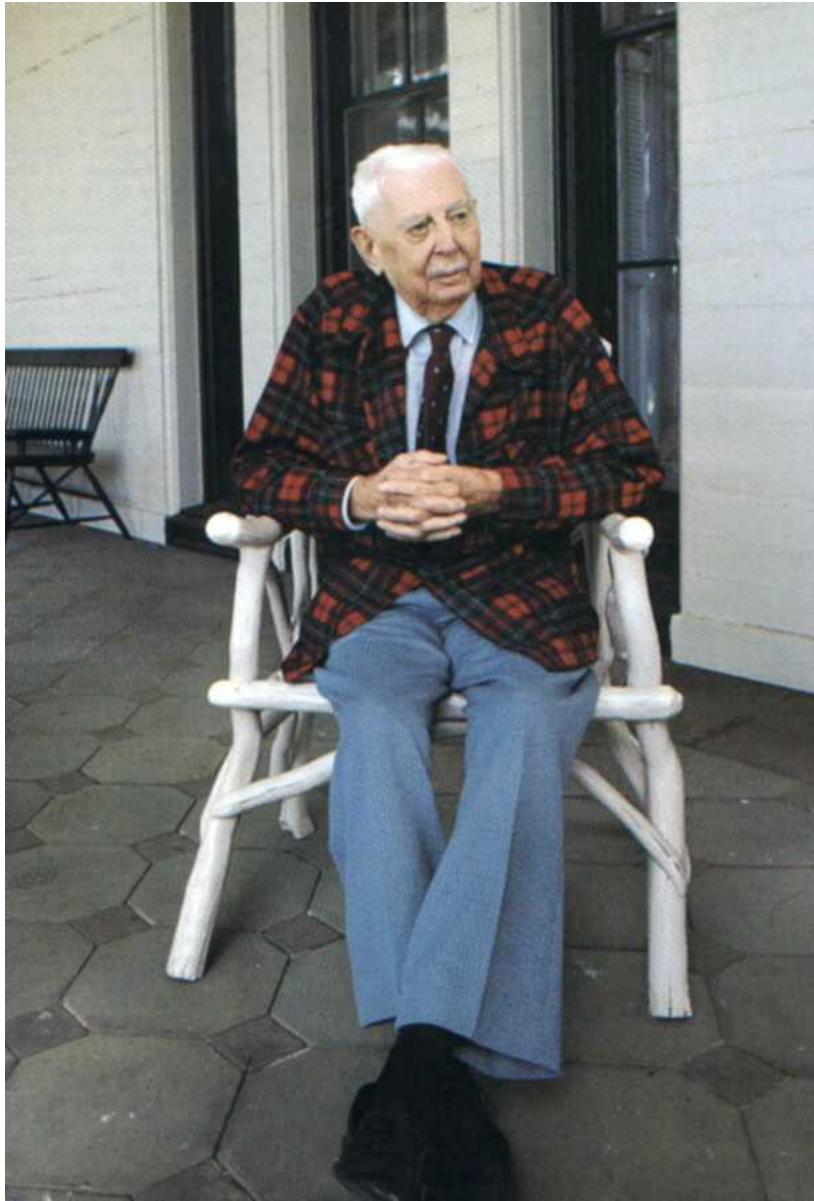
Phone: 703-535-1565 • Fax: 703-535-1566

www.NPAonline.org

PACE in the States

- There are 92 PACE Programs operating in 31 states.
- States with a PACE Program:

AL	LA	NY	SC
AR	MA	NC	TN
CA	MD	ND	TX
CO	MI	OH	VA
DE	MO	OK	WA
FL	NE	OR	WI
IA	NJ	PA	WY
KS	NM	RI	



Providence ElderPlace

- Was one of the original 5 demonstration sites modeled after On Lok
- Opened as an Adult Day Center in 1988
- Became a fully capitated PACE program in 1990

PACE Philosophy

Supports what the older adult wants

- To stay in familiar surroundings
- To maintain autonomy
- To maintain a maximum level of physical, social and cognitive functioning

Providence ElderPlace Portland

- 1002 members - 7 Health & Social Centers in Multnomah County
 - Cully
 - Glendoveer
 - Gresham
 - Laurelhurst
 - Marie Smith Center
 - Irvington Village
 - Lambert House

Coming Soon to Washington County...

- EP in Beaverton - June 2013

Living Options

- ElderPlace program housing
 - Glendoveer Residential Care
 - Cully Residential Care
 - Irvington Village Assisted Living
- Contracted housing
 - Adult Care Homes
 - Residential Care and Assisted Living
- Own home or with family
 - In-Home services

Clients who especially benefit from EP

Individuals with :

- Several medical conditions
- No family or out of state family
- Stressed family or caregiver
- Rehabilitation needs
- Frequent falls
- COPD, diabetes, frequent ER use

Clients who especially benefit from EP

Individuals:

- Needing a higher level of care / at risk of 30 day notice
- Relocating from a nursing facility or needing a new living situation
- Needing a new physician or unhappy with current physician

ElderPlace Participant Characteristics

- Average age 79 yrs
- Average length of time in EP 2.9 yrs
- Participants with mental health or dementia diagnosis 53%
- Average diagnoses per participant 14
- Average # of medications 13
- Incontinence 80%



"You're fifty-seven years old. I'd like to get that down a bit."

ElderPlace Participants who need Assistance with Activities of Daily Living

- Bathing 84%
- Dressing 65%
- Grooming 58%
- Toileting 54%
- Transferring 41%
- Walking 48%
- Feeding 38%

PACE - Multnomah Co. Comparable Populations

Outcome from PricewaterhouseCooper
Actuarial Report for 2006:

ElderPlace cost is 86% of average LTC cost for
the comparable population in Multnomah
County

2012	<u>ElderPlace</u>	<u>Multnomah Co.</u>
SPL 1 - 4	66%	58%
SPL 5 - 9	20%	27%
SPL 10-13	14%	15%

Staying Healthy

Provider Access

- 80% of participants see their Primary Care Provider or PCP (physician or nurse practitioner) each month
 - ElderPlace averages 2 visits per month
 - Medicare averages 5 visits per year
 - Average caseload for EP PCP is 110 participants

Staying Healthy

- 93% of participants see their RN in the clinic each month
- Participants see their Social Worker on average 4 times per month

Direct Care Access

- Participants, families, caregivers have direct access 24 hours per day/7 days per week



Key Benefits of the Program

- Unique solution to today's complicated care system
- Integrated team of medical and social care providers
- Care team gets to know each participant on a personal level
- Regular, frequent contact enables preventative care
- Allows seniors to remain in community with enhanced quality of life

www.providence.org/elderplace

(503)215-6556



Shared Cases - how it works

- Introductions:
 - ~Katie Messirow, Multnomah County Aging & Disability Services Transition & Diversion Coordinator
 - ~Karen Casciato, Providence ElderPlace Intake & Enrollment Specialist
- Case study - Mr. Smith
- Referral , Intake and Enrollment process
- Questions